
LOGISTICS REPORTS: Non-Reporting Facilities

ROLE: Admin, LMU

ITERATION: May 2nd, 2013

Functional Specifications

Overview

Purpose This report lists facilities whose reports have not been received or recorded in Supply Chain Manager for the selected reporting period. Logistics managers may use this report to determine reporting compliance and to monitor the status of report processing. Facility information to display in this report would be:

- **Report Title:** Facility/Site Listing
- Supplying Facility
- Facility Name
- Facility Type
- Location

Non reporting Facilities can be generated with the following parameters:

- Period. Month, quarter, first half, second half, or year
- Facility Type. A selected facility type or a facility type group incorporating several facility types
- Reporting Group. A selected reporting group based on the reporting groups you defined

Scope

This is an essential report that needs to be run by roles list on this document.

Design Considerations

Dependencies

This report depends on — (1) finalized facility table with column already defined, (2) facility add/update/delete form developed, (3) facility data upload routine working correctly (optional) 4) Monthly report submission entered

Functional Requirements

Roles

Admin, LMU, MSD

Business process definition

Facility. These are warehouse, stores, health centers, community health facilities. Any entity that request commodities to store, to supply to lower level, to dispense to client, to consume as part of service delivery process. Facility Listing Report. A report that are periodically ran to review currently active or inactive facilities, to identify who is the contact person at the facility, to find the contact persons address and contact details.

User stories

Kofi, the warehouse manager want to list the facilities that he supplies to, to find out whom he still had not received any LMIS report for this period.

Functional requirements for the filtering form

#	Requirement	Importance	Status
REP-ADM-00x-01	<p>A report parameter/filtering form with following feature:</p> <ul style="list-style-type: none"> • Period. Attributes: drop-down list; sorted asc; width to fit; required; contains list of predefined period in ascending order • Facility Name. Attributes: drop-down list; sorted asc; width to fit; required field. • Facility Attributes: drop-down list; sorted asc; width to fit; optional. • Reporting Group: drop-down list; sorted asc; width to fit; optional; contain list of user-defined facility groups • Search. Attributes: button; visual toggle on mouse hover; keyboard accessible through hot key 	Must Have	Spec developed
REP-ADM-00x-02	<p>Report filtering form UI requirements:</p> <ul style="list-style-type: none"> • Tool tips on fields with field descriptions. • Collapsible Filtering section so that it can be collapsed/expanded to allow more viewing area for the report output • Proper alignment of fields labels; consistent font weight and font face • HTML output with navigation for multi-page list • HTML output in alternate row shading in light grey preferred • PDF and Excel output. Formatted Excel output in native xlsx format preferred 	Nice to have	Spec developed

#	Requirement	Importance	Status
	<ul style="list-style-type: none"> PDF and Excel output window should open a new window 		

Functional requirements for the report

#	Requirement	Importance	Status
<ul style="list-style-type: none"> REP-ADM-00x-03 	<ul style="list-style-type: none"> The report body should provide following features: Layout should match as closely as possible to the mockup, including header, footer, section breaks, sub-total and total lines PDF output should apply standard size margins Sort order- Facility Name sorted alphabetically, BUT the selected supplier or the zone/district should be listed first and then the facilities 	<ul style="list-style-type: none"> Must Have 	<ul style="list-style-type: none"> Spec developed

User interface mockups

Report parameter/filtering form mockup:

The screenshot shows a window titled "Report Manager" with three tabs: "Admin", "Graphs", and "Logistics". The "Admin" tab is active, displaying a list of report options: "Facility Listing", "Mailing Labels", and "Non-Reporting Facilities". The "Non-Reporting Facilities" option is selected and highlighted in black. Below the list is a "Report Parameters" section with a "Preview" button. The parameters include:

- Period: October (dropdown)
- Year: 2010 (dropdown) with a "Default" button
- Category: * (dropdown)
- Product: * (dropdown)
- Facility Type: * (dropdown)
- Facility: * (dropdown)
- Reporting Group: * (dropdown)
- Facility Type Group: * (dropdown)
- Adjustment Type: * (dropdown)

There is also a "Comments" field containing "No Comment" and a checkbox for "Allow Continuous Printing" which is currently unchecked. A "Close" button is located at the bottom right of the form.

Report Layout mockups

ARV Drug Logistics System
Ministry of Health
Logistics Management Unit

Non-Reporting Facilities All Facility Types Reporting Group all

Run Date: 03-May-13
Run Time: 5:10 PM
Page: 1 of 1

Period: Oct 2010

Supplying Facility

Facility	Type	Location
Medical Stores Limited		
Chiengi DHMT	DHMT Chiengi	
Chililabombwe DHMT	DHMT Chililabombwe	Chililabombwe
Isoka DHO	DHMT Isoka	
Kalabo DHMT	DHMT Kalabo	
Kaoma DHMT	DHMT Kaoma	
Luwingu DHMT	DHMT Luwingu	
Mambwe DHMT	DHMT Mambwe	
Mansa DHMT	DHMT Mansa	
Masaiti DHMT	DHMT Masaiti	
Mbala DHMT	DHMT Mbala	
Mpongwe DHMT	DHMT Mpongwe	
Mwinilunga DHMT	DHMT Mwinilunga	
Nchelenge DHMT	DHMT Nchelenge	
Petauke DHMT	DHMT Petauke	
Estates Rural Health Centre	HC Kafue District	
Nangongwe OPD	HC Kafue District	Kafue
ZNS Sopelo (Lusaka West Camp Clininc)	HC Kafue District	
Chazanga Health Centre	HC Lusaka District	
SOS Medical Centre	HC Lusaka District	
ZAF Medical HQ SSQ LSK	HC Lusaka-no nganza	
ZNS Mumbenzi Rural Health Centre	HC Solwezi District	Solwezi District
Kalabo District Hospital	LVL1 Kalabo District	

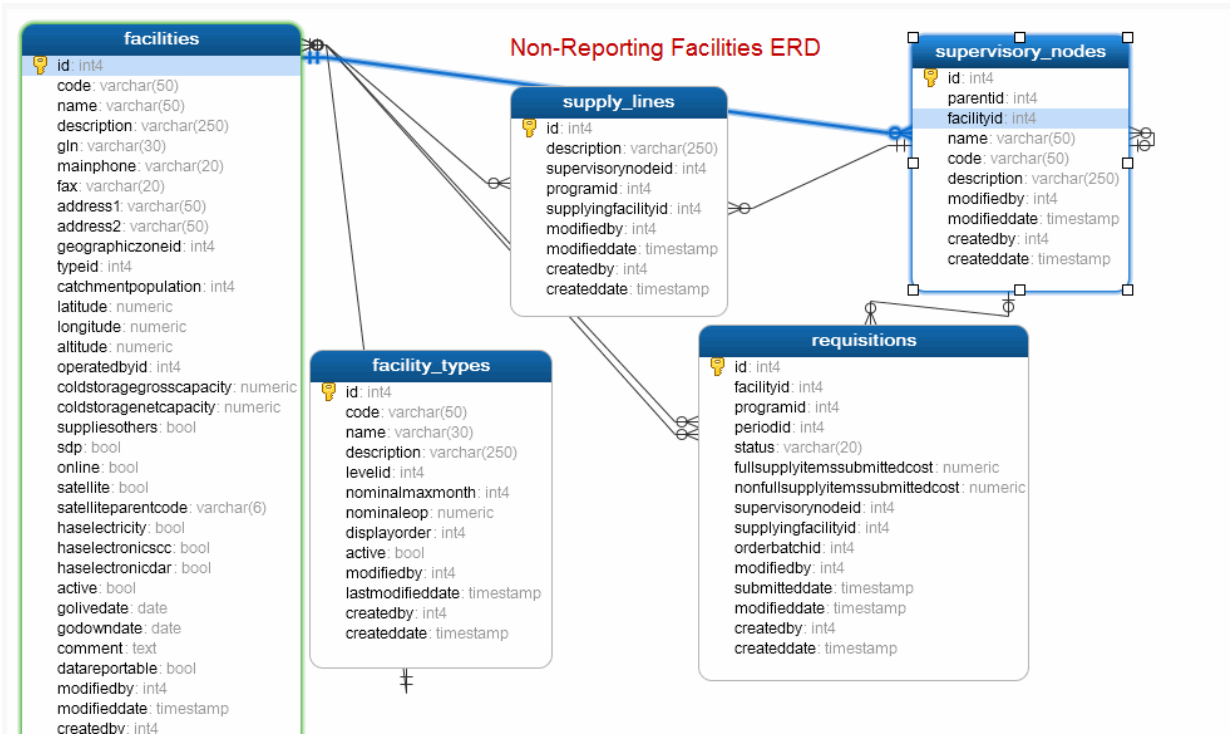
Non-Reporting Facilities	22
Active Supplied Facilities	260
Non-Reporting Percent	8%

Total Non-Reporting Facilities	22
Total Active Facilities	261
Total Non-Reporting Percent	8%

Technical Requirements

Database requirements

Use the facility table



Programming requirements

Reports should be placed on report folder structure on the deployment folder. Each report should have it's own folder. All type of files involved in Model – View – Controller (MVC) structure (*.html, *.xml, *.java and *.xsql files) should be maintained. Jasper report (*.jrxml file) should be created. Report temporary files for PDF and EXCEL should be generated on designated temp folder that are periodically garbage cleaned. Source code needs to be fully documented by through header description, comment on each logical section. SQL statements needs to be QA with SQL explain plan to verify that proper indexes are being used and full table scans are prevented. SQL output needs to be tested against large data set to ensure that the report programming can scale and response from user perspective are within acceptable range.

Specification review milestones

SPEC ASSIGNED

Ashraf

DEVELOPED

60% completed (2013-04-05)

REVIEWED

0%

FINALIZED

2013-04-18

Resources

Query Example from Supply Chain Manager

Field Mapping